

DCH+

Twin Screw Pump



APPLICATION

The DCH+ is a twin screw pump, with hygienic design, suitable for use in the dairy, food and beverage, cosmetics, etc.

The flow is uniform and in an axial direction, so there are no changes of volume or physical properties of the product. Therefore it is an ideal pump for handling shear-sensitive fluids.

It has a high suction lift capability with very low NPSH values.

It is capable of pumping liquids with high viscosity, but also with low viscosity, so it can be used as a CIP-supply pump.

The design ensures a fully cleanability and drainability.

DESIGN AND FEATURES

The DCH+ pumps are available in bare shaft construction and designed according to the EHEDG recommendations. They are built with a sturdy design, ensuring durability, quiet operation, and minimal pulsation during pumping. The mechanical seals have a hygienic design.

TECHNICAL SPECIFICATIONS

Materials

Parts in contact with the product	1.4404 (AISI 316L)
Gear casing	Stainless steel
Gaskets	EPDM

Mechanical seal

Rotary part	silicon carbide (SiC)
Stationary part	silicon carbide (SiC)

Surface finish

Internal	Ra ≤ 0,8 µm
External	matt

Connections

DIN 11851

Operating limits

Maximum flow	214 m ³ /h	942 US GPM
Maximum differential pressure	25 bar	362 PSI
Maximum working pressure	25 bar	362 PSI
Temperature range (EPDM)	-20°C to 120°C	-4°F to 248°F
SIP	140°C (max 30 min)	284°F
Maximum speed	3600 rpm	

Pump	Pitch	Q max 0 bar [m ³ /h]	Speed [rpm]	P max [bar]
DCH+1	C1	11	100 - 3600	25
	C2	15		20
	C3	21		15
	C4	27		10
DCH+2	C1	27	100 - 3600	25
	C2	32		20
	C3	44		15
	C4	65		10
DCH+3	C1	42	100 - 3000	25
	C2	53		20
	C3	71		15
	C4	101		10
DCH+4	C1	85	100 - 2500	25
	C2	107		20
	C3	142		15
	C4	214		10

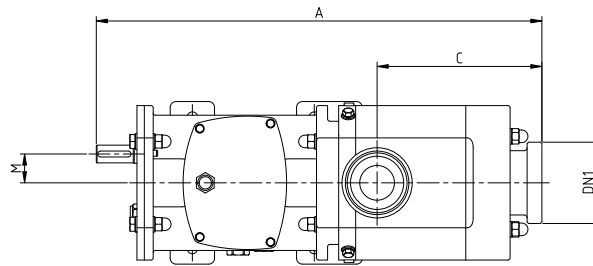
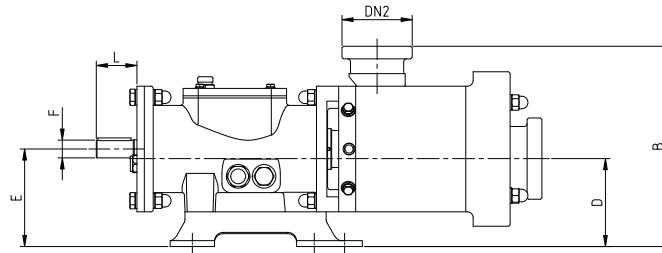
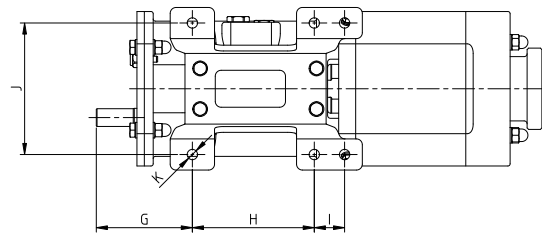
MOTOR

Motor or gear motor with B3 legs, in compliance with the IEC standards,
Efficiency class according to EC regulation, IP 55 protection and F-class insulation.
3 phases, 50 Hz, 230 V Δ / 400 V Y, \leq 4 kW
3 phases, 50 Hz, 400 V Δ / 690 V Y, \geq 5,5 kW

OPTIONS

Mechanical seals: TuC/TuC
Knife-edge single mechanical seals
Double mechanical seals
Gaskets: FPM, HNBR, FFPM
Heating chamber
Connections: CLAMP, SMS, Flanges

DIMENSIONS



01.532.32.0001

Pump	DN1	DN2	Dimensions [mm]												
			A	B	C	D	E	F	G	H	I	J	K	L	M
DCH+1	DN 50 / 2"	DN 50 / 2"	490	200	160	85,5	100	16	104,5	143,5	32	147	12	44	27
	DN 40 / 1½"	DN 32 / 1½"													
DCH+2	DN 80 / 3"	DN 65 / 2½"	600	270	225	120	132	24	130	165	41	179	14	55	39
	DN 65 / 2½"	DN 50 / 2"													
DCH+3	DN 100 / 4"	DN 80 / 3"	715	315	260	145	160	35	160	195	50	229	14	75	47
	DN 80 / 3"	DN 65 / 2½"													
DCH+4	DN 125 / 5"	DN 100 / 4"	950	400	348	173	200	50	209	284,5	65	286	18	110	64
	DN 100 / 4"	DN 80 / 3"													